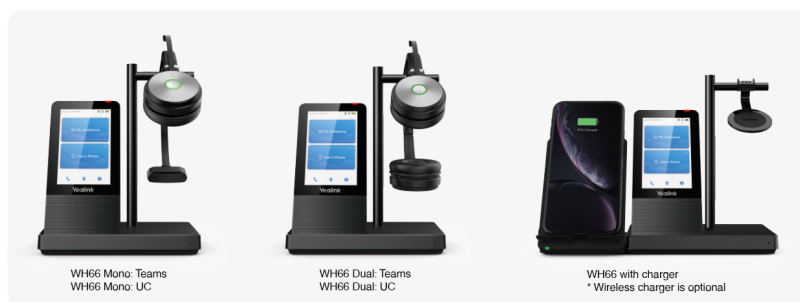
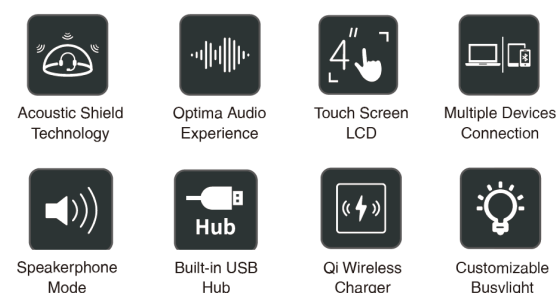


Yealink WH66 Datasheet

All-in-One UC Workstation: Redefine Your Workspace

The Yealink WH66 is the Industry-leading DECT wireless headset, with WH66 Dual and WH66 Mono two models, opening an entirely new form of desktop collaboration. Work seamlessly with major UC platforms and integrate natively with Yealink IP Phones. The 4.0-inch (480 x 800) capacitive touch screen of the base offers a new work experience, just one touch, all control. Act as a workstation, managing phone calls, connecting with multiple devices (desk phone/mobile phone/computer), charging mobile phones wirelessly, and even playing a speakerphone's role. Best of all, deploying such a multi-functional workstation only needs to plug in directly. The easiest things to do, the greatest convenience to enjoy.



Key Features

- USB Connection
- 4.0-inch (480 x 800) capacitive touch screen
- Yealink Acoustic Shield Technology
- 2-port USB 3.0 hub
- Wireless mobile phone charger
- Crystal speakerphone
- Supports busylight
- Teams and Skype for Business are compatible

All-in-One UC Workstation

Desktop collaboration boosts efficiency a lot, especially when working from Home, but it can also be annoying that the desktop is very messy with multiple device cables. Take control of your desktop collaboration environment with WH66:

- Connect all devices you want with built-in Bluetooth and USB ports.
- Expand the PC's connectivity with a 2-port USB 3.0 hub.
- Control all calls on the 4.0-inch (480 x 800) capacitive touch screen by simply finger touch.

- Function as a hands-free phone, freeing you from wearing a conference headset.
- Charge your mobile phone wirelessly and transform it into a nice, efficient conferencing device.

Be Heard Crystal Clearly

With Yealink Acoustic Shield Technology, the two Microphones built into the WH66 block the background noise automatically but ensure the participant's voice is heard clearly, greatly boosting communication efficiency.

Interruption Free

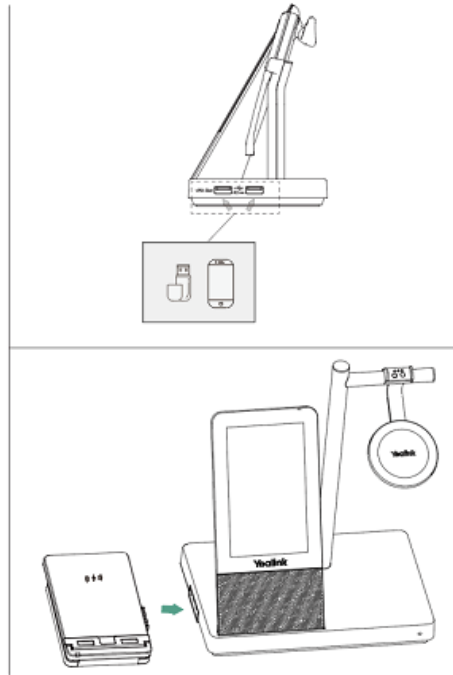
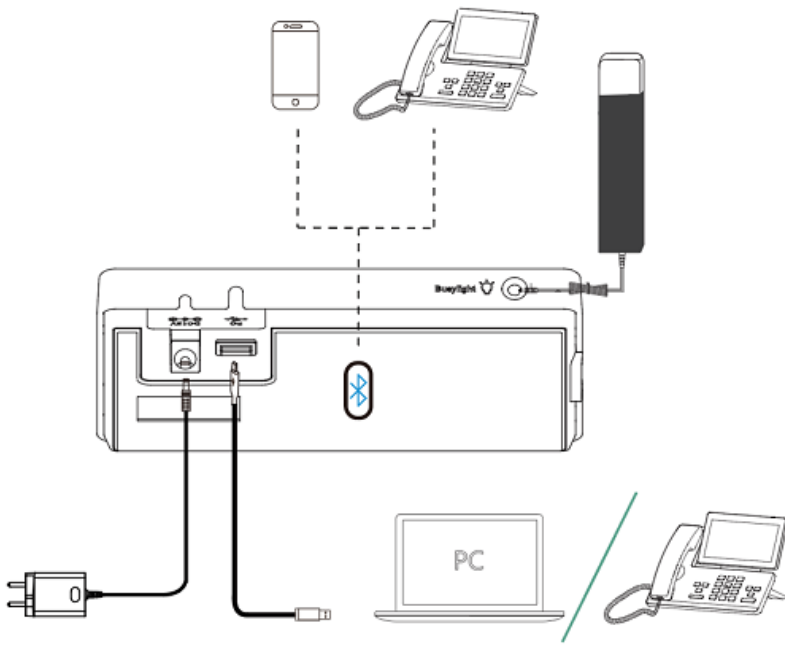
Busylight is enabled in WH66. With the light on the headset or BLT60 on the desk turning red, people around you would know that you are on the phone, instead of unknowingly interrupting you. Just stay focused on the conversation for higher efficiency and better collaboration.

Specifications

Specifications	Introduction
General	<ul style="list-style-type: none"> • 4.0 inch (480 x 800) capacitive touch screen • 2 x feature buttons • 1 x Type-A USB 3.0 port • Built-in Bluetooth 4.2 • Connectivity: USB 3.0 & 2 x Bluetooth devices • Integrated busylight LED indicator • Built-in hub: 2 x Type-A USB 3.0 ports • Boom arm adjustable: 320° • Charging stand (for headset)
Battery	<ul style="list-style-type: none"> • Talk time: up to 13 hours (Mono), up to 14 hours (Dual) • Standby time: 90 hours (Mono), 125 hours (Dual) • Charging time: 2.5 hours (5 V/1.2 A)
DECT	<ul style="list-style-type: none"> • Wireless range: up to 160 m/525 feet • Secure DECT (level): Step C: authentication – DSAA2, encryption – DSC2 (128 bit)
Audio (Headset)	<ul style="list-style-type: none"> • Microphone type: dual microphone • Microphone sensitivity: -44.0+/-3 dBV • Microphone frequency range: 100 Hz-10 kHz • Speaker size: Φ 28 • Speaker sensitivity: 92.5+/-3 dB, 0.179 V • Speaker impedance: 32+/-4.8 Ω • Speaker max output power: 30 mW • Speaker frequency range: 20 Hz-20 kHz • Talk mode: wideband, 100 Hz~8 kHz, 16 kHz sample rate

	<ul style="list-style-type: none"> • Music mode: full-band, 20 Hz~20 kHz, 48 kHz sample rate, Stereo (Stereo only supported by Dual headset) • Hearing Protection <ul style="list-style-type: none"> - Peak Block Protection (EN50332) - Australian G616 Protection (AU G616) - Daily Noise Exposure Protection
Audio (Base)	<ul style="list-style-type: none"> • Microphone type: ECM omnidirectional microphone • Microphone sensitivity: -38.0+/-2 dBV • Microphone frequency range: 70 Hz-20 kHz • Speaker size: 40 mm x 20.8 mm • Speaker sensitivity: 97+/-3 dB • Speaker impedance: 4 Ω+/-15% • Speaker max input power: 4 W • Speaker frequency range: 160 Hz-20 kHz
Easy Call Management	<ul style="list-style-type: none"> • Answer/End/Reject a call • Volume up/down • Microphone mute • Move the microphone boom arm up to mute, or down to unmute
Package Features	<ul style="list-style-type: none"> • Package contents: <ul style="list-style-type: none"> - WHB660 base - WHM621 headset or WHD622 headset - Power adapter - 2 x 1 m USB 3.0 cable - Quick start guide • Optional accessories: <ul style="list-style-type: none"> - Busylight BLT60 - Wireless charger - Bluetooth dongle BT50 • WH66 Mono: Base: 398 g, Headset: 80 g • WH66 Dual: Base: 398 g, Headset: 127 g • Qty/CNT: 10 PCS • N.W/CTN: WH66 Mono: 10.46 kg; WH66 Dual: 10.96 kg • Giftbox Size: 255 mm x 204 mm x 135 mm • Carton Meas: 698 mm x 421 mm x 265 mm

Connection



For more information, please go to the [Yealink official website](https://www.yealink.com).